



YOUR GUARANTEE OF QUALITY

**TOYS**  
for  
**1962**



(See page 11 for details)

*Presenting* THE QUALITY LINE OF  
ORIGINAL DESIGNED AND SCULPTURED TOYS

- CRIB AND INFANT TOYS
- BATH TOYS
- BEDTIME TOYS
- COPYRIGHT WALT DISNEY TOYS
- HI-CLARITY POLY ENVELOPES
- PRE-PRICED FROM 49c TO \$1.98

**VICEROY MANUFACTURING COMPANY LIMITED**

TORONTO — MONTREAL — WINNIPEG — VANCOUVER

PRE-PRICED

49¢



**No. V14051 — DANNY DUCK**

*Approx. 3 1/2" high, 3 1/2" long, 2 3/4" wide*

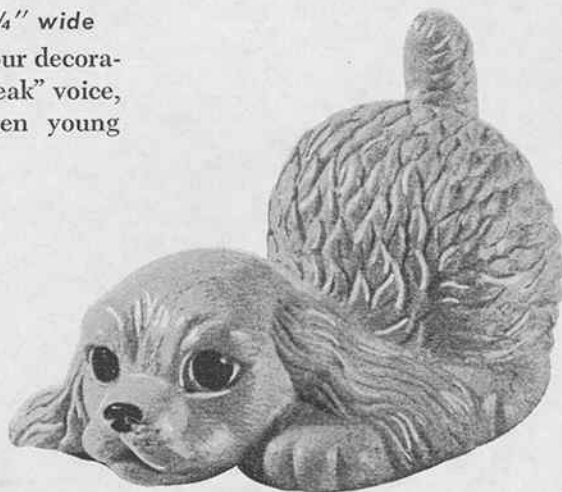
Floating, all Vinyl Duck. Three colour decoration. Cute and appealing. "Soft squeak" voice, especially designed not to frighten young children.



**No. V14052 — RICKY RABBIT**

*Approx. 5" high*

True to life designed to delight children. Three colour decoration. Our exclusive "soft squeak" mechanism is used.



**No. V14053 — PEPPY PUPPY**

*Approx. 2 1/2" high, 3 3/4" long, 3" wide*

This new puppy design, so realistic, will enchant both children and adults. Three colour decoration. "Soft squeak" mechanism used.



**No. V14054 — KUDDLY KITTEN**

*Approx. 4" high*

All new kitten design to attract and "sell". Three colour decoration with "soft squeak" mechanism.



**No. V14055 — BILLY BEAR**

*Approx. 4" high*

Adorably sculptured to enchant every child. Three colour decoration, with "soft squeak" voice.

STANDARD CONTAINER 2 DOZEN  
(ASSORTED COLOURS)

WEIGHT PER STANDARD CONTAINER  
APPROX. 5 LBS.

**No. V14068**

An attractive and well balanced assortment of the above toys.

*Two dozen per Deal — Weight approx. 5 lbs.*



**PRE-PRICED**

**59¢**



**No. V14056 — EFFY ELEPHANT**

*Approx. 5" high, 5" long, 3" wide*

Cute and appealing "Effy" the elephant is sure to please the discriminating buyer.

**No. V14057 — ROLY RHINO**

*Approx. 6" high*

An adorably designed caricature "Roly" the Rhino with his upturned horn and smiling features is softly coloured to enchant the young.



**No. V14044 — DOGGY**

*Approx. 4½" high, 5" long*

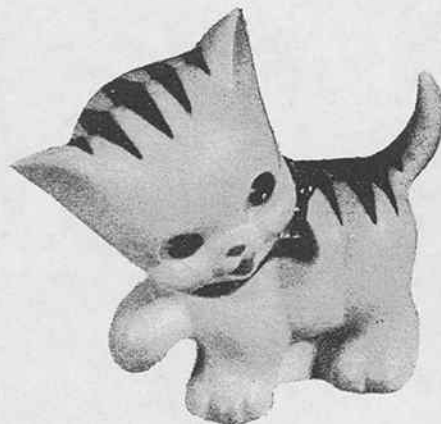
A perennial volume seller with its high appeal for all youngsters.



**No. V14075 — LITTLE WOOLLY**

*Approx. 5" high*

A completely new character, in the animal that every child loves.



**No. V14042 — KITTY**

*Approx. 5" high, 4½" long*

Kitty has always been a big favourite with her attractive and dainty appearance.

**TWO DOZEN PER SHIPPER**

**No. V14442 — DOGGY and KITTY ASSORTMENT**

An assortment of the two top sellers — 1 dozen Kitty — 1 dozen Doggy. Assorted decoration.

**No. V14081 — 59¢ ASSORTMENT**

A balanced assortment of all the above five items for maximum variety — 2 dozen per deal.

*Approx. weight all items — 6½ lbs. per 2 dozen Shipper.*



**No. V14058 — FUNNY BUNNY**

*Approx. 6½" high*

By popular demand, returned to our line, the "Funny Bunny" with a sense of humour.

**PRE-PRICED**

69¢



**No. V14059 — PIGGY WIGGY**

*Approx. 6½" high*

Famous for years, this brightly coloured classic is back to once more delight the children.



**No. V14060 — SALLY SO SOFT**

*Approx. 6½" high*

The original and most famous soft Vinyl doll returns to enchant every young child.

*Packed 1 dozen per Shipper — Assorted colours. Weight approx. 3½ lbs.*



**PRE-PRICED**

79¢

**NEW**

**No. V14077 — 'TOM TUMBLE'**

*Approx. 6" high, 6" wide*

A wonderful, happy little figure. Will stand on hand, head or feet. Extra play value to keep the youngsters amused.

*Packed 1 dozen per Shipper. Assorted colours.*

*Approx. weight 3½ lbs. per Shipper.*





**No. V14071 — DONALD DUCK**

*Approx. 6½" high*

**PRE-PRICED**

**79¢**



**No. V14072 — MICKEY MOUSE**

*Approx. 6½" high*



**No. V14073 — PLUTO**

*Approx. 6½" high*

Three fascinating Disney characters. The accurate modelling enhances their true charm in every way.

*Packed 1 dozen per Shipper. Weight 3½ lbs.*

**No. V14074 — DISNEY ASSORTMENT. 4 each of the above**



**No. V14009 — "RONNIE" BOY DOLL**

*Approx. 8" high*

The boy companion to "Bonnie" matches her in appeal and charm. A volume seller in every respect. Complete in three colour decoration with "soft squeak" mechanism.

*Standard container 2 dozen.*

*Weight per standard container approx. 7½ lbs.*

**PRE-PRICED**

**89¢**

**No. V14007  
RONNIE and BONNIE ASSORTMENT**

*1 dozen each of V14009 and V14008  
to a standard container.*

*Weight per standard container 7½ lbs.*

**No. V14089  
RONNIE and BONNIE TWIN SET**

*Poly package containing  
1 each Ronnie and Bonnie.*

*Standard container 1 dozen sets.*

*Weight per standard container 7½ lbs.*

**NOTE — PRE-PRICED — \$1.69**



**No. V14008 — "BONNIE" GIRL DOLL**

*Approx. 8" high*

Cutely appealing with her integrally molded dress and shoes. Bonnie in her three colour decoration and "soft squeak" mechanism appeals to all children.

*Standard container 2 dozen.*

*Weight per standard container approx. 7½ lbs.*

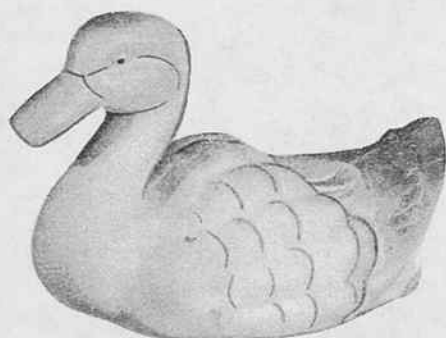
## FOR BATH -

PRE-PRICED

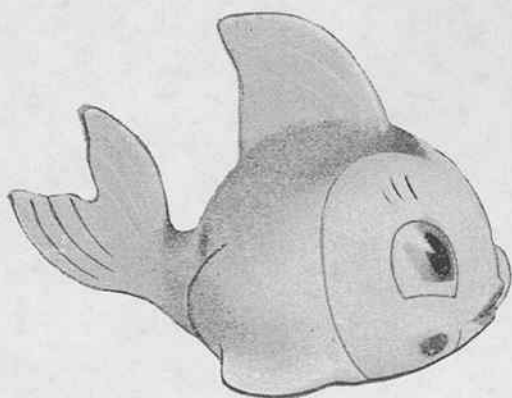
89¢

## BEACH -

## BEDROOM



No. V14020 - DIPPY DUCK  
Approx. 4" high, 7 3/8" long



No. V14022 - CLEO THE FISH  
Approx. 5" high, 7 1/2" long

## NEWEST

FLUORESCENT COLOURS

These three ever-popular floating toys, designed and decorated for bath tub and play pond fun, are colourfully decorated in the NEW "GLO-BRITE" FLUORESCENT COLOURS.



No. V14027 - FLIPPER SEAL

Standard Container 1 Dozen  
Weight Approx. 6 1/2 Lbs.

No. V14084 ASSORTMENT  
Containing 4 each - Dippy Duck  
Cleo Fish and Flipper Seal.



NEW

PRE-PRICED

98¢

## OUTSTANDING CREATIONS!

7 1/2" high

1 Dozen per Container  
Weight Approx. 6 Lbs.



Created for small tykes hands. A real charmer for roving minds of children.

No. V14101 KITTY - PUP

No. V14099 ROCKING HORSE

This sparkling "Rocker" will keep a child occupied many an hour with its beauty and movement.

PRE-PRICED

98¢

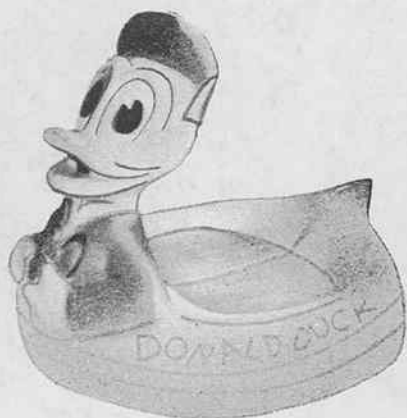
No. V14024 — "DONALD DUCK" SOAP BOAT

Approx. 5 3/4" high, 6 3/4" long, 5" wide

The very popular "Disney" character, familiar to all children, floats, gurgles and bubbles. Brightly decorated to attract and fascinate the young child.

Standard container 1 dozen.

Weight per standard container approx. 7 1/2 lbs.



No. V14033

KAYO THE KANGAROO

A real contender for the heart of every child — soft appealing decoration.

Assorted colours.

Approx. weight 4 3/4 lbs. doz.



No. V14034

TABBY CAT

Delightful modelling tames this toy for tops in child appeal.

Approx. weight 4 3/4 lbs. doz.



No. V14012

KING LEO

King of the nursery. Delicate sculpture gives happy realism. With a crown of gold.

Approx. weight 5 lbs. doz.



No. V14011  
EAGER BEAVER

A 'Canadiana' character toy distinguished by his appealing toque, complimented by his scarf, axe and jacket—remembered by his smile.

Approx. weight 4 3/4 lbs. doz.



"COIN BANK" FEATURE ON KING LEO AND EAGER BEAVER

PRE-PRICED

98¢



No. V14061 — PRANCER THE PONY



No. V14025 — WOOLLY THE LAMB

Approx. 7" long, 6" high

All Vinyl, beautifully sculptured toys, with moveable heads. Safe, sanitary and completely washable, with their delicate colours and gaily decorated features, will be a sure fire hit with every child.



No. V14062 — BASEBALL PLAYER

7½" high

Complete with ball, glove and cap, this little fellow is a welcome addition to any team.

All items packed 1 dozen to Shipper. Approx. weight 5 lbs.



No. V14026 — HOCKEY PLAYER

Approx. 7¼" high

Young 'Stanley' is certain to take the cup for giving pleasure. Of soft safe Vinyl, he is decorated in three colours.



No. V14021 — FOOTBALL PLAYER

7½" high

An irresistable little football player in his brightly coloured uniform, makes a wonderful toy for all future football greats. His coloured helmet and a football tucked under his arm makes this toy a humorous addition to any family.





**No. V14030  
TOD-L-DEE DOLL**

Each doll approx. 10½" high, bright three colour decoration. Realistic plastic eyes securely fastened. Shoes and panties molded into unit to provide SAFE play for young children.



**No. V14032  
TOD-L-TIM DOLL**

**No. V14302 — ASSORTMENT of above dolls.**  
8 Pcs. V14030, 4 Pcs. V14032. Weight approx. 6¼ lbs.

**PRE-PRICED**

**98¢**



**No. V14070 — SANTA CLAUS**  
Approx. 7" high

What youngster could fail to believe when they see this beautiful model of their all-time favourite character. Three colour decoration with Play Safe feature.

Weight approx. 5 lbs.



Suggested Retail \$1.98

**No. V14067 MARY AND HER LAMB**

Packaged to sell. A suitcase box with acetate cover for heightened sales appeal.

Packed 6 sets to Shipper. Approx. weight 7 lbs.



Suggested Retail \$2.98

**No. V14038 — TOD-L-TWINS**

Dressed in matching smartly styled play suits and packed in a window box carrying case.

Standard container six sets.

Weight per standard container approx. 8¾ lbs.

PRE-PRICED

1.98



**No. V14015  
PANDA BEAR**

A snugly companion to every youngster when bedtime comes. Of soft yet tough Vinyl, it will last through childhood.

*Packing — ½ dozen to Shipper.*

**No. V14063  
MASTER MONKEY**

An impish grin adds positive appeal to this pet. Highlighted with his panelled cap, he is soft honey brown in colour.

*Packing — ½ dozen to Shipper.*

**No. V14079  
ASSORTMENT**

- 3 Pcs. Goldie Bear
- 2 Pcs. Master Monkey
- 1 Pc. Panda Bear

A compact assortment for maximum sales appeal in any type of store.



**No. V14029  
GOLDIE BEAR**

This young fellow is right out of storyland. Has warmth, charm and appeal. Honey gold in colour.

*Packing — ½ dozen to Shipper.*



*All items  
approx. weight  
9 lbs. per Shipper*

**SUGGESTED RETAIL \$1.69**



**MICKEY**



**MINNIE**



**DONALD**

**DISNEYLAND  
CHARACTER DOLLS**

**Displayed individually in  
outstanding window  
style boxes**

**8" long**

**NEW for '62**

**9" high**



**No. V14100  
HERMAN THE PUP**

**A welcome "Pet" for any home.  
Soft, Cuddly - Guaranteed  
House-broken!**

*1 doz. per shipper  
Weight Approx. 6 lbs.*



**No. V14102  
BUSTER BUNNY**

**A Long Line Pet  
For That Special Gift.**

PRE-PRICED

1.98



**WALT DISNEY'S  
FINEST  
CREATION**

---

**THE WORLD'S  
TOP  
PROFIT PRODUCER**

---

**No. V14078 — MICKEY MOUSE CLOWN**

Loved by children everywhere! Now captured with superb modelling as the happiest and jolliest clown.

Mickey is the most widely accepted character toy proved by years of profitable selling . . . certain to stay at the top.

*11" high, 6" wide*

*Packing ½ dozen per Shipper — Approx. weight 8 lbs.*

**VICEROY MANUFACTURING COMPANY LIMITED**

**TORONTO — MONTREAL — WINNIPEG — VANCOUVER**