

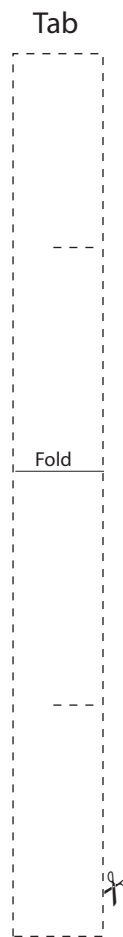
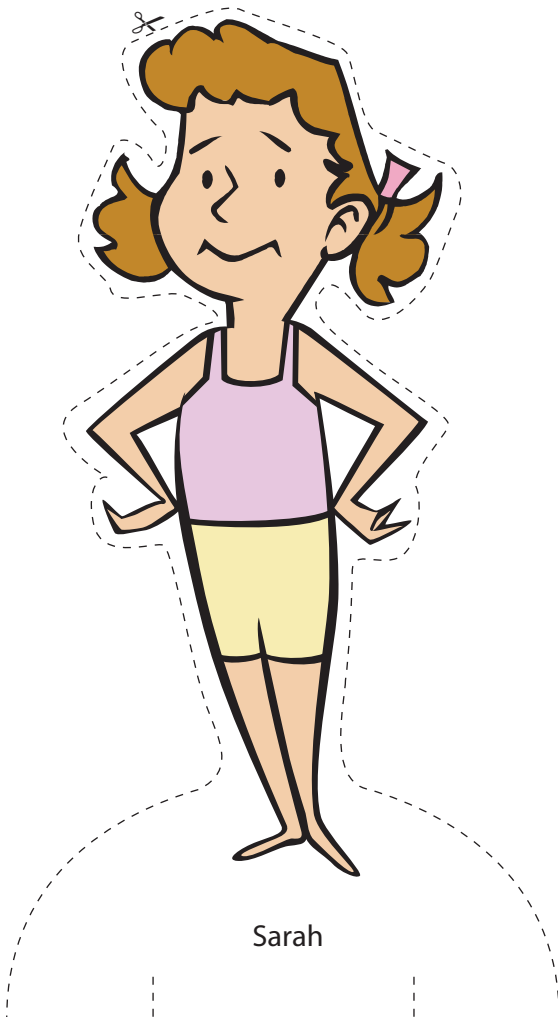


Before E-commerce

A History of Canadian Mail-order Catalogues

Make Your Own Paper Dolls

Sarah Paper Doll



Instructions

1. Print doll on paper.
2. Glue printed doll on a piece of cardboard (e.g., cereal box cardboard)
Let glue dry.
3. Follow the dotted line to cut out doll. Cut tab.
4. Fold tab and insert into the two slits, on the base of doll.



Before E-commerce

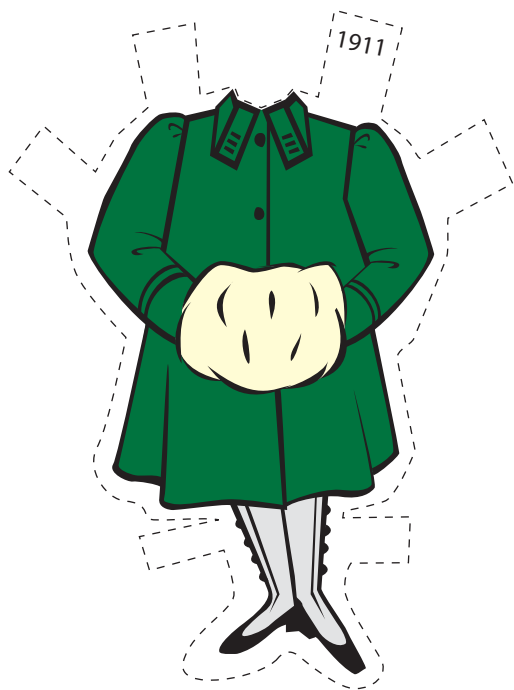
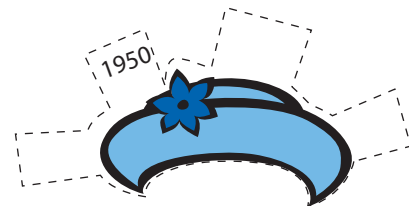
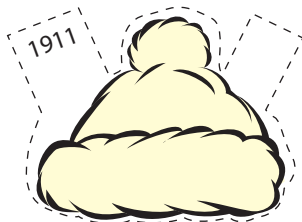
A History of Canadian Mail-order Catalogues

Make Your Own Paper Dolls

Sarah's Wardrobe 1911 and 1950

Instructions

1. Print clothes on paper.
2. Follow the dotted line to cut out clothes.
3. Fold tabs.



1911 Goodwin's Fall-Winter
p.23 item S-202



1950 Eaton automne-hiver
p.185 item J (dress) and p.93 item Z (hat)